

BlueWave[®] QX4[®]

Frequently Asked Questions

LED Heads & Lenses

Q: Can multiple extension cables be used on one channel? If so, how many?

A: Yes, the QX4[®] extension cable assemblies can be daisy-chained together to form longer runs to a total length not to exceed 3 meters.

Q: If we were to use 3 LED heads on the QX4, do the extension wires need to be the same length?

A: Each channel has its own independent power components so varying wire lengths have no real effect on performance. In addition, wire lengths of 3 meters have a minuscule effect on electrical properties.

Q: Why are different lenses needed for the 3 different wavelengths?

A: Each wavelength required custom lenses to keep the working distance of 5 mm the same for each wavelength.

Q: How can you tell the difference between the lenses for each wavelength?

A: The lenses are color coded with silver, blue, or no (black) rings to match the LED heads.

Q: What happens if you mix up the lenses and the LED heads?

A: There would be a slight difference in intensity, uniformity, and beam profile (which can affect cure), but no damage will occur to the unit or the LED lenses.

Q: Do the lenses degrade and need to be replaced?

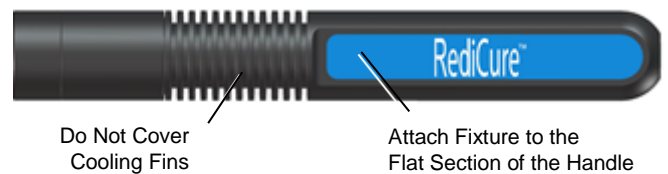
A: Yes, as with all optics, there will be degradation and the rate will be dependent on usage. Maintaining clean optics is the best approach for longest usable life before replacement is necessary.

Q: Are common solvents like IPA or Butyl Acetate ok for cleaning the lenses?

A: IPA is the correct cleaning agent to use. Since these lenses are plastic, ammoniated cleaners should not be used.

Q: Any suggestions on how to best fixture the LED heads?

A: We recommend using non-marring set screws or splitting collar clamps when fixturing the LED heads. Also, to avoid overheating, do not cover the LED head's cooling fins. We suggest clamping on the flat portion of the handle as shown below.



Q: What is the focal or working distance for this system?

A: The recommended focal or working distance is 5 mm. At this distance, the optics and LED head provide the optimum intensity.

Q: Is the focal distance measured 5 mm from the edge of the lens housing or from the center of the lens?

A: It's measured from the edge of the lens housing.

Operation

Q: What if we operate the unit at a distance of 10 or 15 mm?

A: Operating the system at that distance will decrease the intensity but that may still be acceptable for your application.

Q: Is it possible to set up 4 working stations with 4 foot switches?

A: No.

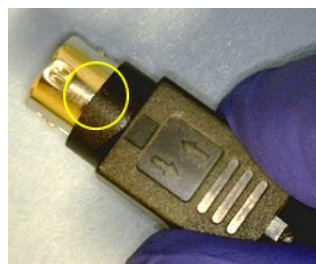
Q: Can that be done by using an external PLC?

A: Yes, using the I/O connections on the back connectors of the QX4 controller, you can attach a PLC to control intensity and exposure times of each channel independently or combined.

Misc.

Q: The power plug is a bit tricky to insert. Any suggestions on how to do that without damaging the plug?

A: The plug assembly is oriented by locating the flat surface of the housing toward the top. Also identified are arrows that indicate that when inserting the connector into its receptacle, the sleeve should be retracted. This will allow easy insertion. Removal of plug from receptacle is easily accomplished by a retraction of the housing in a direction away from the connector.



Position of plastic when housing is not retracted



Retracted position for insertion and removal



© 2015-2017 Dymax Corporation. All rights reserved. All trademarks in this guide, except where noted, are the property of, or used under license by Dymax Corporation, U.S.A.

Technical data provided is of a general nature and is based on laboratory test conditions. Dymax does not warrant the data contained in this bulletin. Any warranty applicable to the product, its application and use is strictly limited to that contained in Dymax standard Conditions of Sale published on our website. Dymax does not assume responsibility for test or performance results obtained by users. It is the user's responsibility to determine the suitability for the product application and purposes and the suitability for use in the user's intended manufacturing apparatus and methods. The user should adopt such precautions and use guidelines as may be reasonably advisable or necessary for the protection of property and persons. Nothing in this communication shall act as a representation that the product use or application will not infringe on a patent owned by someone other than Dymax or act as a grant of license under any Dymax Corporation Patent. Dymax recommends that each user adequately test its proposed use and application before actual repetitive use, using the data in this communication as a general guideline. FAQ003DA 4/11/2017

Dymax Corporation
+1.860.482.1010 | info@dymax.com | www.dymax.com

Dymax Europe GmbH
+49 (0) 611.962.7900 | info_de@dymax.com | www.dymax.de

Dymax Engineering Adhesives Ireland Ltd.
+353 21.237.3016 | info_ie@dymax.com | www.dymax.ie

Dymax Oligomers & Coatings
+1.860.626.7006 | info_oc@dymax.com | www.dymax-oc.com

Dymax UV Adhesives & Equipment (Shanghai) Co. Ltd.
+86.21.37285759 | dymaxasia@dymax.com | www.dymax.com.cn

Dymax UV Adhesives & Equipment (Shenzhen) Co. Ltd.
+86.755.83485759 | dymaxasia@dymax.com | www.dymax.com.cn

Dymax Asia (H.K.) Limited
+852.2460.7038 | dymaxasia@dymax.com | www.dymax.com.cn

Dymax Asia Pacific Pte. Ltd.
+65.6752.2887 | info_ap@dymax.com | www.dymax-ap.com

Dymax Korea LLC
+82.2.784.3434 | info_kr@dymax.com | www.dymax.com/kr